

RTMS and PBS in the Forestry Industry

RTMS & PBS Workshop, July 2019

By Francois Oberholzer



FORESTRY SOUTH AFRICA

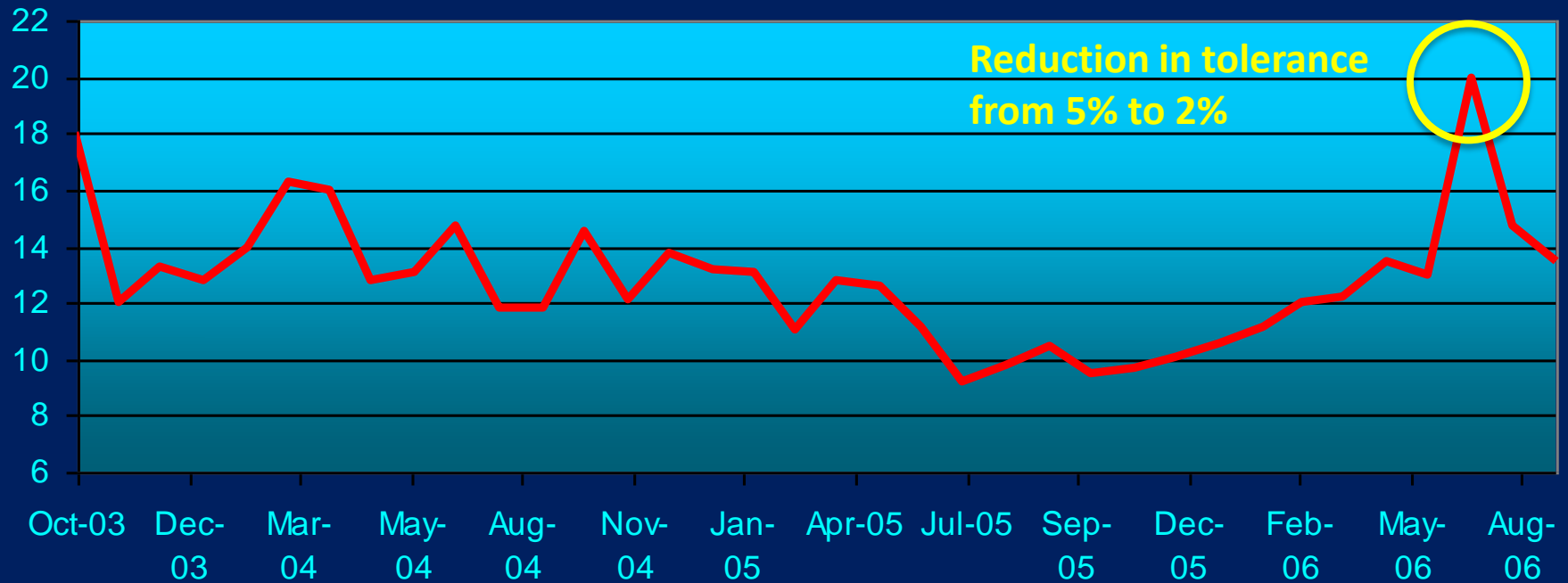
History of Self Regulation in the Timber Industry

- Cost of Transport was increasing (Transport = 50% of cost in timber). WHY?
- Road conditions deteriorating due to overloading
 - Rising maintenance costs R 10 billion p.a and rising
 - Maintenance scheduling falling behind
- Main thrust behind Self Regulation:
 - Manage the risks associated of infrastructure deterioration
 - Manage the risk of GVM reduction on provincial roads
 - This is why PBS and concessions were important
 - Safety, driver wellness etc.

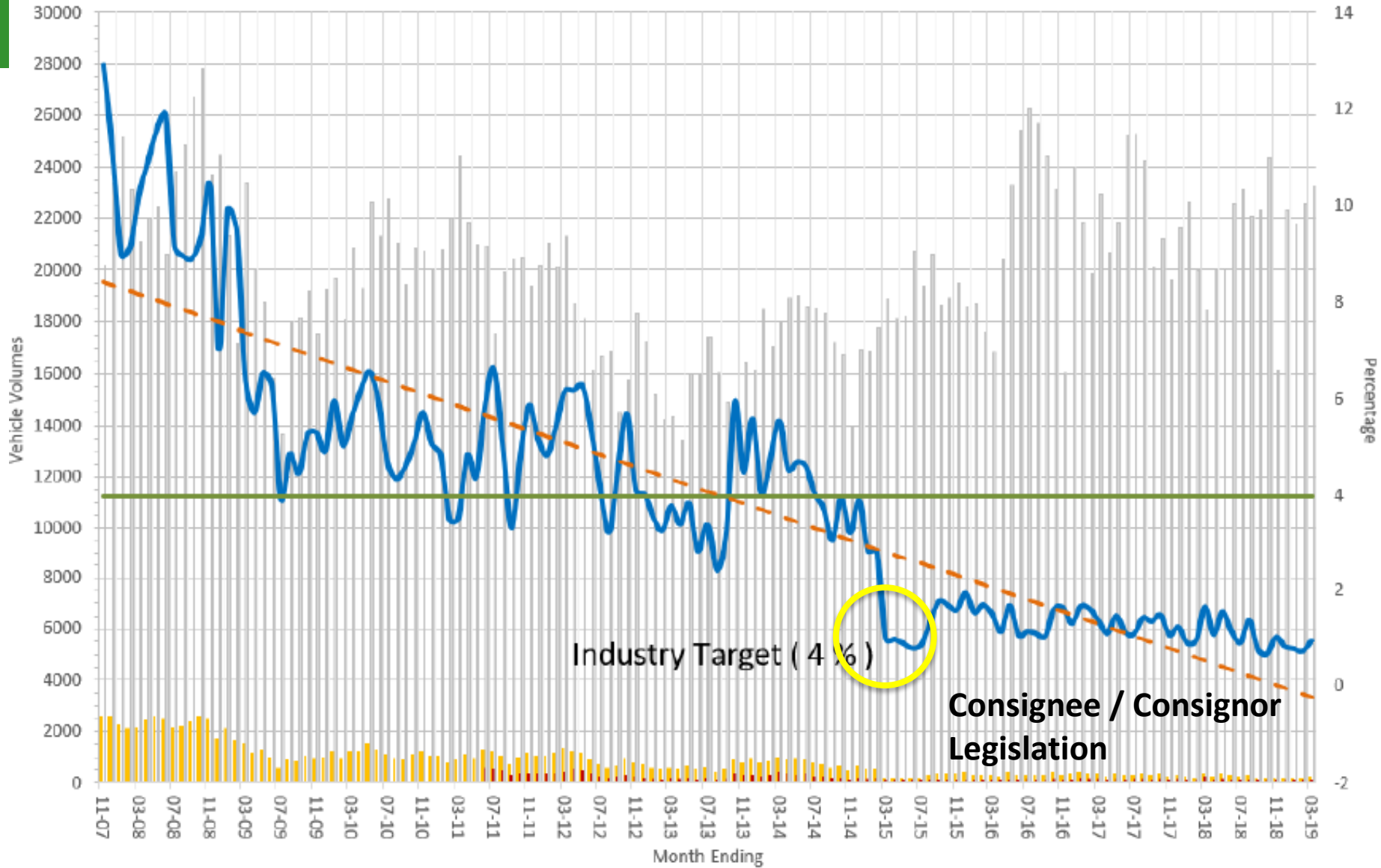
History of Self Regulation (continued)

- RTMS was founded in the Forestry Industry in 2003 as LAP (Load Accreditation Programme)
- First Transporter was accredited in 2004 (Timberland Transport)
- Target was set at 4% overloads for the industry. Overloading ranged between 15% and 20% at the time

Overload statistics in Forestry



Percentage Overload



PBS in Forestry

- The first PBS vehicle was launched in 2007 by Timber 24.
- June 2018 – 92 PBS Vehicles in Forestry
 - Trips saved per year: 11 385
 - KM's saved per year: 3 161 439
 - Fuel saved per year: 753 119 litres
 - Crash rate (crashes / million kilometres):
 - Baseline: 2.99
 - PBS: 1.29

A lush green forest landscape with a large log in the foreground and a green banner with the text 'THANK YOU!'. The background shows a dense forest of tall trees covering a hillside under a cloudy sky. The foreground is a grassy field with a large, dark, charred log lying horizontally. A green banner with white text is positioned in the upper left quadrant.

THANK YOU!

www.forestry.co.za | www.forestryexplained.co.za